

# INIS Newsletter

Head Teacher - Mrs Marshall

## November 2022 - Issue 5 Head Teacher Update

It has been lovely to see our children back after the half term break ready to learn. We would like to welcome our new families into school and if you have any questions please do not hesitate to contact the school office on 01933 654900 or via email on [inisoffice@iflt.org.uk](mailto:inisoffice@iflt.org.uk). We also welcome some new members of staff joining our lunch time team in Nursery. Welcome Mrs Dale, Mrs Nsubuga and Mrs Powell! Staff and children have all settled to lunches well in Nursery. We are looking for parents or grandparents to volunteer to support with reading in school. If you have some regular time please contact the school so we can arrange training. Practising reading is key to making progress.



### Anti-Bullying Week Odd Sock Day Monday 14th



We know that our children are young but this is where good habits are learnt and developed. We actively teach our children to understand how to be kind and to be a good friend. We do not tolerate bullying but our children may need to be taught about caring relationships and how to establish strong friendships. We empower children to be able to tell a grown up when they have been hurt by someone else or they have hurt someone else.

It is vital that we can celebrate our differences and similarities as human beings, which is the idea around the odd socks. We will be working on this concept all week and will be drawing self-portraits looking at ourselves and others and discussing how we are different and the same. Look out for our special celebration of "**Great Mates**" next Friday. This is a special certificate that is voted for by the children in the class. Teachers ask the children to think about who is helpful, kind and supportive in their class from the children's point of view.

We want all our children to understand how to be a "Great Mate" and what to do if they ever encounter a bully.

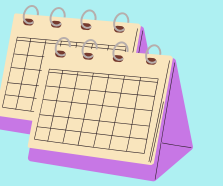
We simply describe bullying as something mean which is done **Several Times On Purpose (S.T.O.P)**. Children sometimes fall out or say things because they are upset. When occasional problems of this kind arise, it is not classed as bullying.

We also use **S.T.O.P** to encourage the children to **Start Telling Other People**. It vital that children talk to adults about any one going issues with other children, so we can support them to resolve any problems.

**For more information:** <https://anti-bullyingalliance.org.uk/anti-bullying-week/odd-socks-day>



### Upcoming Dates



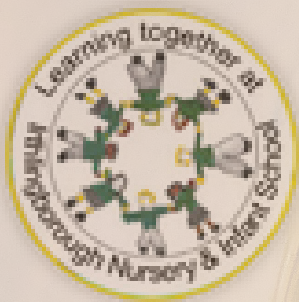
[Click here for a full calendar of dates](#)

- **Saturday 12th November**- Choir at St Peter's Church
- **Sunday 13th November**- Remembrance at the memorial in Irthlingborough
- **Monday 14th November**- Odd socks day for anti-bullying week.
- **14th/15th November** - Reception Phonic demo lessons
- **Friday 18th November**- Children in need day- **Mufti Day**
- **Tuesday 22nd November** - Year Two SATs workshop at **9am** and at **6pm**.
- **Thursday 24th November** - PTA Christmas Grotto and Tombola!
- **Thursday 8th December** - Christmas Jumper Day!
- **Tuesday 13th December**- **9.15am** and **2.30pm** Year Two Winter singing concert for parents
- **Thursday 15th December**- Christmas lunch day- book early at **Kingswood**
- **Thursday 15th December** - Rocksteady Concert for Parents
- **Friday 16th December**- Mufti day- Break up for Christmas holidays

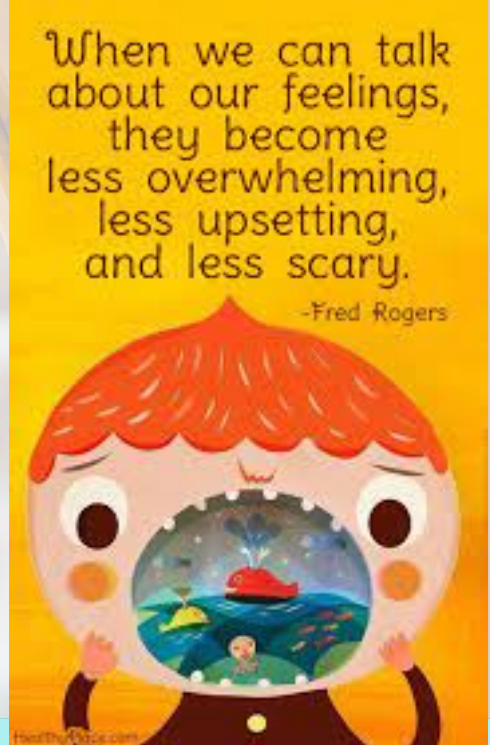


If you have any safeguarding concerns please contact the school on 01933654900, the local authority following the link [report a concern](#) or NSPCC report a concern to [NSPCC](#)





# INIS Newsletter



November 2022 - Issue 5

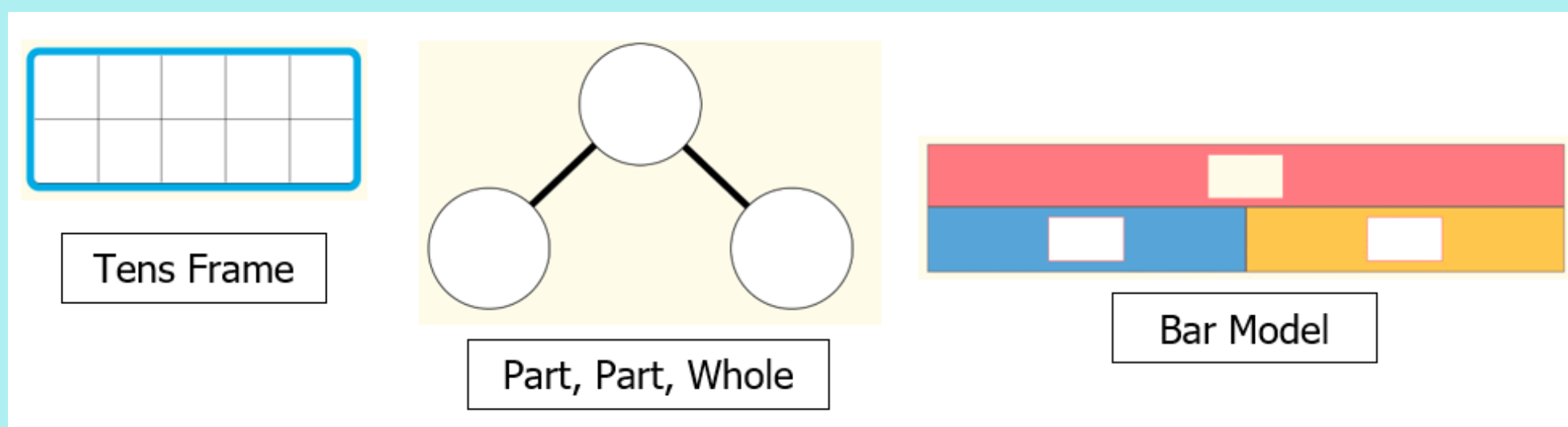
## Maths at INIS

We are proud to be part of the teaching for mastery approach in Maths across school with staff taking part in work research groups as part of the national agenda to deepen children's mathematical understanding, ensuring they have a secure number sense.

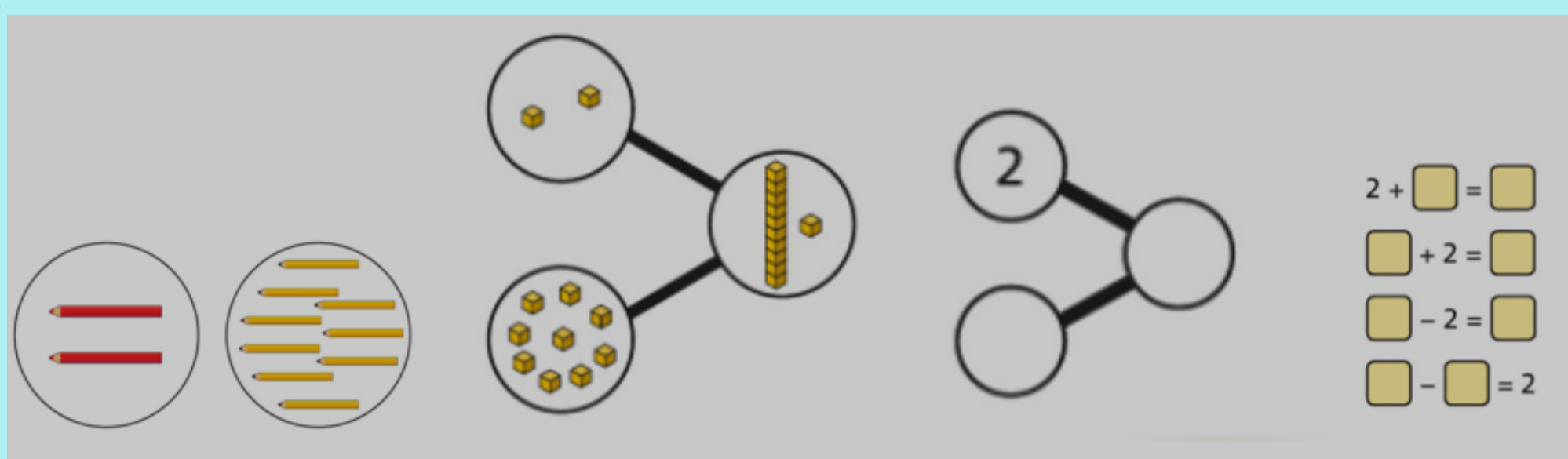
We focus on the children being able to subitise amounts and manipulate numbers mentally. From the beginning of school we look at how numbers are composed and decomposed. Children develop an understanding of the whole number and it's parts. This lays the foundations for developing secure mental strategies for number bonds, essential for calculations.

With each new concept we cover in maths, we break it down into small steps to ensure the fundamentals are covered and that no gaps in children's understanding develop. Children are given time to master each of these small steps.

At the beginning of each new step the children use **concrete** materials (different objects) to represent their mathematical thinking. The children use a variety of tools to support their learning such as tens frames, part part wholes and bar models across school.



Once the children are secure with explaining their mathematical understanding using the practical resources, they then move on to representing their understanding **pictorially** before they begin to use more **abstract** methods such as calculations.



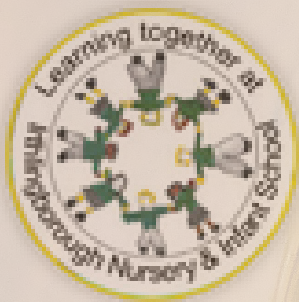
At every stage we are looking for the children to use the correct **mathematical terminology in full sentences to explain and justify their understanding**. To ensure the children are mastering the skills and concepts, children are given time to practice individually or in small groups, rehearsing and developing their skills to build **fluency**, understanding of the concept and confidence. Children are provided opportunities to spot purposeful mistakes so that they can explain their understanding and make corrections. This enables the children to make connections in their learning and supports the children to retain the concepts and skills so that they are built upon as they move throughout the school.

**We have a new digital prospectus on our website please check it out! New digital prospectus is here!**

If you have any safeguarding concerns please contact the school on 01933654900, the local authority following the link [report a concern](#) or NSPCC report a concern to [NSPCC](#)

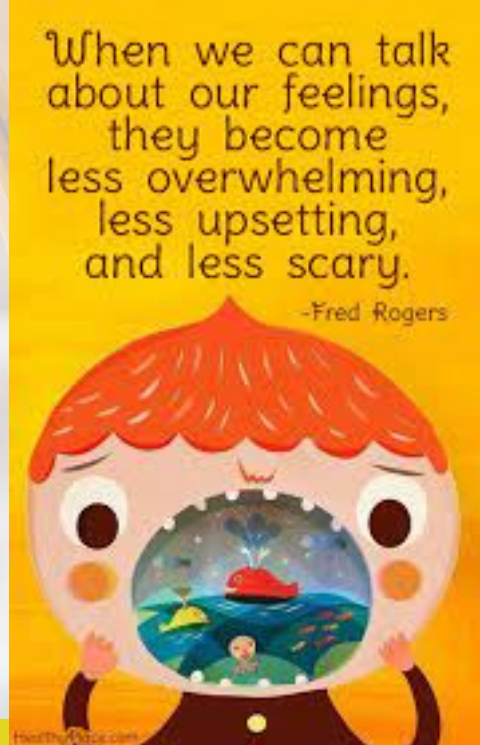






# INIS Newsletter

November 2022 - Issue 5



## Special Education Needs support

If you would like further support around special educational needs, please talk to your child's class teacher in the first instance. They may refer you to our special educational needs co-ordinator (SENco) Mrs Sullivan. We want all our children to achieve the best they can and by providing the best support in class, through the teacher's planning and additional resources which may help with learning, social skills or emotional development. Support from our local authority often takes a long time to come so I'm very pleased to see that they are starting to involve parents and you can have your say! If you have a child with special educational needs, please do consider attending the meeting in Wellingborough on 6th December.

## Help your child with Maths at home

Children have access to a **Numbots** account:

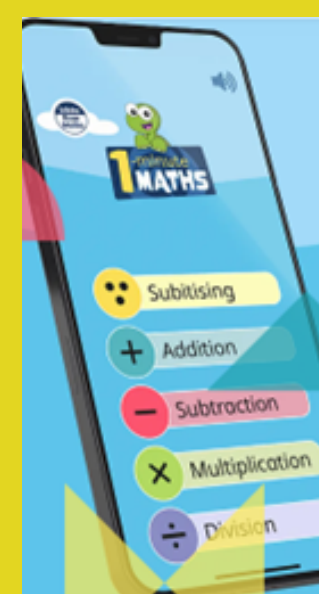
<https://play.numbots.com/#/account/school-login/21559>



Children have been sent home their **Numbots** log on's, please contact your child's class teacher if you have misplaced them.

White Rose Maths have also developed a free APP which has 1 minute games to support children's number fluency. Please click on the following link to find out more information.

<https://whiterosemaths.com/resources/1-minute-maths>



For more information about our Maths Curriculum, including the small steps and **calculations** we use across school please take a look at our calculation procedure on our website:

<https://www.irthlingborough-inf.northants.sch.uk/news/whole-school>

## Special Educational Needs Parent Update

November 2022

### Welcome to our first briefing

Welcome to our first briefing for families of children with special educational needs. We know it has been a challenging time for families who have been undergoing an assessment or with an education and health and care plan to contact the local team. In this first briefing, we have included professional contact details of the helplines that have now been established for families.

We also have the first of our locality parent drop-ins in December, where the local team are looking forward to meeting with families in Wellingborough to find out how we can provide guidance and help in supporting your child's special need within the home context and to find out what is really important to you and your child and how we can work more closely together.

Nichola Jones  
Head of Special Educational Needs  
[nichola.jones@northnorthants.gov.uk](mailto:nichola.jones@northnorthants.gov.uk)

### Improving our performance

We know we have a long way to go to improve the services for assessment and reviewing children with an Education Health and Care Plan.

Here is some of the progress we are making:

We are making progress with the timeliness of our assessments with an average of 56% completed on time for January to September compared with an average of 20% between August and December of last year.

We have reduced the number of out of time statutory assessments currently awaiting completion from over 100 to 19.

## Locality early help and meet the team events for parents

As part of the SEND early help offer for schools, we are inviting schools to apply for funding to support children and young people who have a SEND support plan, without the need for an Education Health and Care Plan. In addition, each school now has an allocated SEND Support officer who provides advice and support for children with SEND needs.

We have also been working closely with Maple fields Special School and will be launching the Social, Emotional and Mental Health team in November, where schools can access support and advice from the specialist outreach team.

To meet your local team and to find out how you can get advice and support, you can join in with local parent network events that will be starting in December. We would like to find out how the team can work more closely to support families in the local area. For example, dropping in to chat to an educational psychologist or advisory SEND specialist about your child, or you may want to hear from our specialist team about a range of topics.

The first one of these events is being held in Wellingborough on the 8<sup>th</sup> December at:

**The Wellingborough Museum**

**Dulley's Baths, 12 Castle Way, Wellingborough NN8 1XB**

**on 6<sup>th</sup> December 2022 @ 4:30pm - 5:30pm**

To register for the event, or for more information, please contact: [pamela.hobart@northnorthants.gov.uk](mailto:pamela.hobart@northnorthants.gov.uk)

Please give your name and phone number with your child's name, date of birth and their school

Unfortunately, we cannot offer creche facilities. There is parking available nearby.

If you have any safeguarding concerns please contact the school on 01933654900, the local authority following the link [report a concern](#) or NSPCC report a concern to [NSPCC](#)





# INIS Newsletter

November 2022 - Issue 5

## PTA news

This week we had our Annual General Meeting for our PTA. We have a wonderful small group of dedicated supporters on our PTA and it was lovely to see some new faces. We are always happy to welcome new supporters to our meetings.

There were elections for the designated positions. Meet our new Team:

**PTA Chair:** Mrs Dawn Nsubuga

**PTA Vice Chair:** Mrs Sabrina Johnson

**PTA Treasurer:** Mrs Rebecca Courcoux

**PTA Secretary:** Mrs Lisa McDougall

They are planning a wonderful opportunity to meet Father Christmas on Thursday 24th November. This is a very busy time for Father Christmas and although it may be early this was the only time he could be booked! He will be busy checking all the children's treats are in order, closer to Christmas! Christmas gift shop coming soon too!

**Look out for PTA events!**

## FANTASTIC COMMUNITY EVENT!

### CHRISTMAS DAY BREAKFAST (FREE!)

*College St Centre, Ithlingborough, NN9 5TU*

DECEMBER 25TH  
8.30-10AM

EVERYONE WELCOME  
FREE HOT FOOD AND DRINKS  
FRIENDLY COMPANY

07722843821 FOR MORE INFO



If you have a concern or have seen any Safeguarding issues that you are worried about, Mrs Marshall is the school's Designated Safeguarding Lead and here are her safeguarding deputies, who are always ready to listen. Please ask at the office to speak to them in confidence call 01933 654900.



Mrs Marshall



Mrs Parsons-Moore



Mrs Luke



Mrs Cummins



Mrs Richardson

Syed Shah is our Governor for safeguarding and Penny Reading is the Trust safeguarding lead.

## Harvest festival

Thank you for all your donations for our harvest festival collection. We have had a lovely thank you card from our local food bank. We are so pleased we could help in our local community.

